

# Interpersonal Acceptance

International Society For Interpersonal Acceptance-Rejection



## Inside this Issue

**7th ICIAR in Athens—President’s invitation.....3**

**Ron Rohner honored with Henry David International Mentoring Award (APA).....4**

**ISIPAR election’s nomination slate.....5**

**Selected nominations open for ISIPAR’s regional representatives.....9**

**We all need a HUG—“It is all about warmth and acceptance”.....10**



# 7<sup>th</sup> International Congress on Interpersonal Acceptance and Rejection (ICIAR)

**May 15—18, 2018**

**Panteion University Athens**

**Athens, Greece**



Photo credit: Google images

For more information visit:

<http://isipar2018athens.panteion.gr/>

**SAVE THE DATE!**



## President's Invitation

Dear Colleagues and Friends,

It is with great pleasure that I invite you to an exciting event, the 7th International Congress on Interpersonal Acceptance Rejection (7<sup>th</sup> ICIAR). The International Society for Interpersonal Acceptance Rejection (ISIPAR) has chosen the beautiful city of **Athens, Greece** for its **7<sup>th</sup> International Congress** to be held from **15 to 18 May 2018**. Athens is an excellent setting to discuss the current progress, development, new concepts, and advances in the field of interpersonal acceptance and rejection. The Congress will take place at Panteion University of Social and Political Sciences, Department of Psychology.

The importance of interpersonal acceptance rejection in lifespan relationships is gradually being recognized by all. It includes issues such as parental acceptance-rejection, peer acceptance-rejection, acceptance-rejection in intimate relationships, parental alienation, loneliness, forgiveness, and fear of intimacy, among many other issues. The Congress focuses on research and applied fields, combining interdisciplinary and cross-cultural approaches. During the international congress worldwide opinion-leaders, experts, researchers, and students coming from various cultural and geographical backgrounds will share their work in the areas of interpersonal acceptance-rejection, parental alienation, as well as clinical assessment and evaluation. Young scientists and advanced students are encouraged to present their recent findings through oral presentations or posters.

As President of the International Society on Interpersonal Acceptance and Rejection (ISIPAR), I invite you to attend the Congress. Join us to expand the horizons of the Society and to envisage the future of interpersonal acceptance and rejection.

I look forward to welcoming you in Athens, one of the most beautiful cities in the entire world!

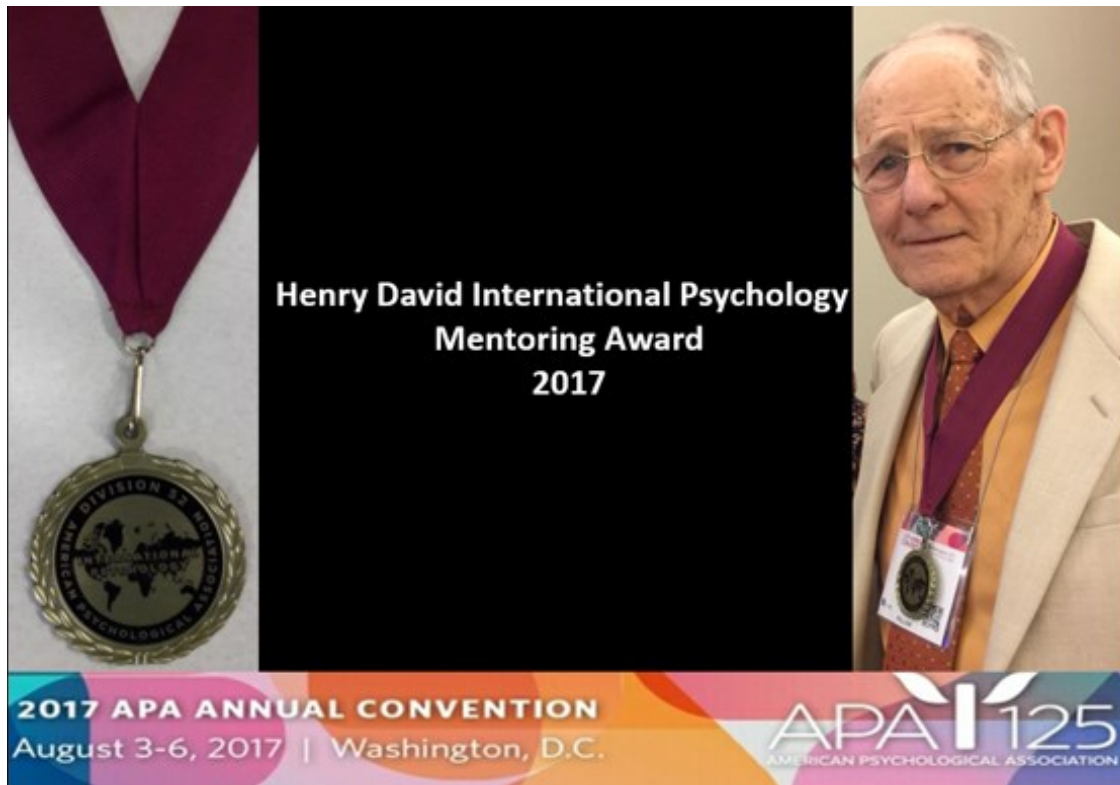
With my best regards,  
Artemis Giotsa, PhD.

Associate Professor of Social Psychology  
University of Ioannina  
Greece  
President ISIPAR



# Henry David International Mentoring Award 2017

## APA's Division 52



**Throughout his academic career Ron has fostered multiple generations of talented academicians and researchers. Here is a collective word from the nominators:**

Ron--as our greatest mentor--is a didactic instructor, a passionate researcher, a seeker of talent and truth, an upholder of impeccable standards, a tough task maker when necessary, a compassionate listener, a dedicated and patient teacher, and above all a compassionate friend...Keep going, we are following....

Sending air HUGS from across the globe:

- Francisco Machado, PhD (Portugal)
- Miguel Ángel Carrasco, PhD (Spain)
- Artemis Giotsa, PhD (Greece)
- Muhammad Mussaffa Butt, PhD (Pakistan)
- Xuan Li, PhD (China)
- Ppudah Ki, PhD (Korea)
- Nazma Khatun, M.Phil (Bangladesh)
- Current advisees UConn, USA
- Alex Molaver
- Sumbleen Ali



## **2017 ISIPAR Elections for President-Elect and Regional Representatives**

**ISIPAR's Nominating Committee is pleased to announce its recommended slate of Officers and Regional Representatives for 2018. Below you will find biographical statements for each candidate for office.**

**ISIPAR members will receive a ballot soon.**

### **President-Elect:**

Brien Ashdown, Ph.D.

New York, USA

[Ashdown@hws.edu](mailto:Ashdown@hws.edu)



Brien is an associate professor of psychology at Hobart and William Smith Colleges. He holds a bachelor's degree in psychology and Spanish from Weber State University in Ogden, Utah, and master's and doctorate degrees in cross-cultural developmental psychology from Saint Louis University in St. Louis, Missouri. His main research interests focus on cultural influences on the social development of adolescents and young adults. Specifically, he is interested in how cultural variables influence and are influenced by group identities and attitudes, religion and religiosity, sexual attitudes and behaviors, and parenting. As a cross-cultural psychologist, a large part of his research focuses on Latin America, and in particular Guatemala. In recent years, he has spent significant time extending measures and correlates of interpersonal acceptance-rejection theory to Guatemala, and has given various conference presentations on the topic, as well as published related empirical articles.

## 2017 Election's Nomination Slate

### Secretary Treasurer:

Nancy D. Rohner, BS

Connecticut, USA

[Rohner.isipar@gmail.com](mailto:Rohner.isipar@gmail.com)



Nancy has worked as executive assistant in the Rohner Center for 33 years, and is closely acquainted with the workings of the International Society for Interpersonal Acceptance and Rejection since its inception in 2006. She served as Secretary-Treasurer for the last four years, and has accepted re-nomination for another four-year term. Nancy hopes that someone will emerge from the Society's membership who will be able to carry on the duties of Secretary-Treasurer after this term expires—because she will be 82 years old by then and hopes to retire!

### Regional Representative for North America:

Carrie M. Brown, Ph.D.

California, USA

[carrie.brown@wgu.edu](mailto:carrie.brown@wgu.edu)



Carrie is a Course Faculty at Western Governors University -- a private, nonprofit, online American university based in Salt Lake City, Utah. Her service to ISIPAR includes co-editing *Expanding Horizons: Current Research on Interpersonal Acceptance* (2012), and being the inaugural Faculty Advisor to ISIPAR's Student Advisory Committee. Carrie's current research interests include the psychosocial correlates of interpersonal acceptance and rejection. She earned her Ph.D. in experimental psychology (with a concentration in developmental psychology) from Saint Louis University. Carrie has mentored many undergraduate students to successfully conduct IPARTheory research, inspiring them to continue academic careers.

## 2017 Election's Nomination Slate



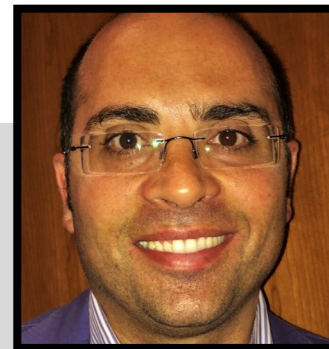
### **Regional Representative for South America:**

Tatiana Melendez-Rhodes, PhD

Connecticut, USA

[tmelendezm@hotmail.com](mailto:tmelendezm@hotmail.com)

Tatiana is an Assistant Professor and clinical coordinator of the Marriage and Family Therapy Program at Central Connecticut State University (CCSU). She is also a licensed marriage and family therapist in Connecticut, a Clinical Fellow of the American Association for Marriage and Family Therapy (AAMFT), an AAMFT Approved Supervisor, and a former Fulbright Scholar. She received her masters and doctoral degrees in Marriage and Family Therapy from the University of Connecticut. She is also a clinical psychologist in Peru and has also taught in universities in the U.S. and in Peru. She has presented her research in national and international conferences and published scholarly work in peer-reviewed journals. One of her research interests for the last ten years has been interpersonal acceptance-rejection. She has had the opportunity to collaborate with Dr. Ronald Rohner in several research projects, and one of her goals is to integrate models of couple and family therapy into IPARTheory in a way that psychotherapists internationally can apply in their clinical work.



### **Regional Representative for Europe:**

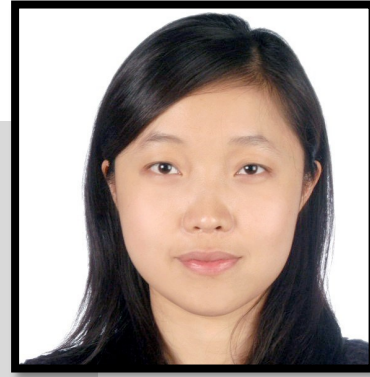
Vincenzo Paolo Senese, PhD.

Naples, Italy

[vincenzopaolo.senese@unicampania.it](mailto:vincenzopaolo.senese@unicampania.it)

Paolo is an Associate Professor of Psychometrics in the Department of Psychology, University of Campania "Luigi Vanvitelli", Italy. He is also the head of the Psychometric Laboratory at that university. His main research interests are on the application of measurement models in the development of tests and questionnaires, with a special attention to the cross-cultural invariance, and on the evaluation of the effect of remembrances of acceptance-rejection during childhood and implicit and automatic processes on parental behavior. Paolo has completed several international collaborative studies, and he has participated in externally-funded and academic-funded projects, published in national and international peer-reviewed journals, and served as editorial member or referee for national and international peer-reviewed journals.

# 2017 Election's Nomination Slate



## Regional Representative for East Asia:

Xuan Li, Ph.D.

Shanghai, China

[xuanli@nyu.edu](mailto:xuanli@nyu.edu)

Xuan is an Assistant Professor of Psychology and Global Network Professor at New York University Shanghai. She is also an affiliated faculty member of the Department of Psychology, Steinhardt School of Education, New York University. She completed her undergraduate study at Peking University, China, and obtained her master's and PhD degrees from the University of Cambridge, United Kingdom. Her research focuses on fatherhood, parenting, and child development in Chinese families, but she is also interested in interpersonal acceptance-rejection in various relational contexts such as romantic relationships, friendships, and peer relationships. She has been a member of ISIPAR since 2011, acting as a student advisory board member from 2012 to 2015. She continues to bridge ISIPAR with Chinese students and scholars.



## Regional Representative for South Asia:

Muhammad Mussaffa Butt, PhD.

Lahore, Pakistan

[mussaffa@gcu.edu.pk](mailto:mussaffa@gcu.edu.pk)

Mussaffa is an Assistant Professor in the Department of Psychology, GC University, Lahore, Pakistan. His research interests include substance abuse, emotion regulation, intergroup conflict, gender, and family related Issues. He developed interest in IPARTheory after reading Rohner's *They Love Me, They Love Me Not: A Worldwide Study of the Effects of Parental Acceptance and Rejection*. His PhD work explored the role of interpersonal acceptance-rejection in substance abusers where he also discussed the possible implications of present perception of parental acceptance-rejection. Mussaffa is working on a number of projects related to IPARTheory, and he provides guidance to Pakistani students interested in working on the theory. He worked with the Chair (Prof. Farah Malik) of the Urdu Translation Committee for Pakistan, and translated and validated a number of IPARTheory measures into Urdu. He is also interested in neuroscience-based explanations of IPARTheory.



# 2017 Election's Nominations Needed

*Please nominate someone as a regional representative for the following locations:*

*Self-nominations are welcome!*

**Sub-Saharan Africa**

**Mexico, Central America, & the Caribbean**

**Insular Pacific & Australia**

**Southeast Asia**

Nominations for office (including self-nominations) are invited **until Monday, October 16, 2017**. Please send your nominations to **Ronald P. Rohner** ([r.rohner@uconn.edu](mailto:r.rohner@uconn.edu)).

Provide an email address for your nominee, and specify which region of the world your nominee represents. Also, briefly describe the nominee's interest and background in interpersonal acceptance-rejection research and/or practice. Nominees do not have to be current ISIPAR members, but must join in order to be considered for office.

For details please refer to the Constitution and By-Laws of the ISIPAR at [isipar.uconn.edu](http://isipar.uconn.edu)



**We want to send you a HUG...because**

**“A Hug Is A  
Great Gift—One  
Size Fits All, And  
It’s Easy To  
Exchange.”**

The Fresh Quotes

Here is a must watch video on “Everyone Needs A Hug”...  
the compassionate world begins with you

**[VIDEO](#)**

Editor: Ronald P. Rohner, PhD

Editorial Assistant: Sumbleen Ali